

Multi Commander (Explorer) How To ...

In this document Figure 1 identifies the various regions of the Multi Commander interface. See <http://multicommander.com/docs/mainlayout#presentationarea> for more details.

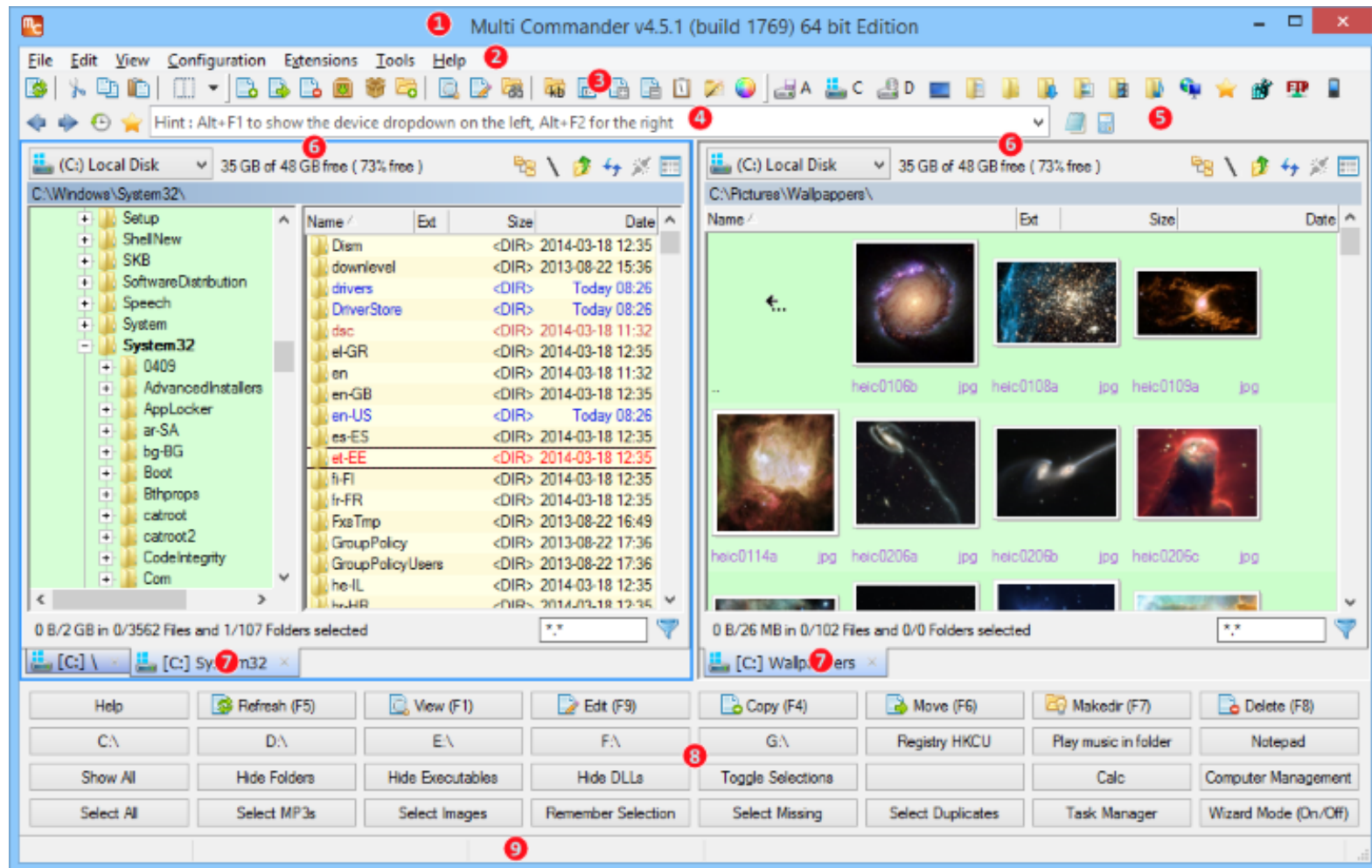


Figure 1: The Multi Commander Main Application Layout

These regions are

- | | | |
|-----------------|-------------------------------------|---------------------------|
| 1. Title Bar | 4. Command Line Field | 7. Tab Area |
| 2. Menu Bar | 5. Quick Launch Bar | 8. Button Panel/Log Panel |
| 3. Toolbar Area | 6. Presentation Area/Explorer Panel | 9. Status Bar |

How To ...

Button Panel

Change number of button rows	From the Menu Bar in Figure 1, Configuration▸Core Settings▸Layout▸Application layout▸Button Panel▸Button Rows
Edit Buttons	From the Menu Bar in Figure 1, Configuration▸Button Editor
Hide/show the button panel	Press Ctrl ▸ B when not on the panel.
Make buttons look like buttons	From the Menu Bar in Figure 1, Configuration▸Core Settings▸Layout▸Application layout▸Button Panel▸Transparent buttons. Uncheck box.

Clipboard

Copy file/folder path & name to clipboard	Press Ctrl ▸▸ P .
Copy file/folder name to clipboard	Press Ctrl ▸▸ Shift ▸▸ P .
Copy file/folder path to clipboard	Press Shift ▸▸ Alt ▸▸ P .

Display

Add external programs to the Quick Launch Bar in Figure 1	Copy and paste the program’s icon to the Quick Launch Bar.
Change Date and Time format	From the Menu Bar in Figure 1, Configuration▸Explorer Panel settings▸Display▸Date/Time format
Duplicate the file listings to the second panel	Press Ctrl ▸▸ . .
Go back to earlier panel	Press Alt ▸▸ Left .
Go forward to later panel	Press Alt ▸▸ Right .
Place drive icons on its own line	From the Menu Bar in Figure 1, Configuration▸Explorer Panel Settings▸Layout▸Toolbars▸Main windows toolbars▸Drive buttons▸Place the drive toolbar on its own line. Check box.
Remove drive icons from Toolbar Area in Figure 1	From the Menu Bar in Figure 1, Configuration▸Explorer Panel Settings▸Layout▸Toolbars▸Main windows toolbars▸Drive buttons. Uncheck box.
Show drive buttons inside the Presentation Area in Figure 1	From the Menu Bar in Figure 1, Configuration▸Explorer Panel Settings▸Layout▸Toolbars▸Explorer panel toolbars (inside the tab)▸Drive buttons. Check box.
Show files in a list, detailed list, thumbnail list, or thumbnail detailed list	In the Presentation Area in Figure 1, press the right-most icon—it looks like a square.
Show history of previous folders	In the Command Line Field in Figure 1, press the third icon from the left—it looks like a clock. Or press Alt ▸▸ Down .
Show/hide a tree-like structure in either of the two panels	In the Presentation Area in Figure 1, press the left-most icon—it looks like a tree.
Sort files in numerical order	From the Menu Bar in Figure 1, Configuration▸Explorer Panel settings▸Display▸Sorting and Columns▸Sort files and folders in natural order. Check box.
Swap panels	Press Ctrl ▸▸ U .
Switch from Windows Explorer to Commander Style	From the Menu Bar in Figure 1, Configuration▸Quick Look ‘n’ Feel Setup ...

File/Folder Manipulation

Copy highlighted file/folder	Press F4 .
Create a folder	Press F7 .
Delete highlighted file/folder	Press F8 .
Dismount USB thumb drive	In the Presentation Area in Figure 1, press the fourth icon from the left—it looks like plugs being uncoupled.
Edit a File	Press F9 .
Move highlighted file/folder	Press F6 .
Remove dialog when copying a file/folder by drag and drop	From the Menu Bar in Figure 1, Configuration▸Core Settings▸Filesystem▸Drag and Drop file operations▸Copy. Uncheck box.
Remove dialog when moving a file/folder by drag and drop	From the Menu Bar in Figure 1, Configuration▸Core Settings▸Filesystem▸Drag and Drop file operations▸Move. Uncheck box.
Rename highlighted filename or folder	Press F2 .
View a File	Press F1 .

Keys

Customize hotkeys	From the Menu Bar in Figure 1, Configuration▸Keyboard Customization
Export all hotkeys to a text file	From the Menu Bar in Figure 1, Configuration▸Keyboard Customization▸Export to file

Tab Area

Close a Tab	Press Ctrl ▸▸ W .
Duplicate a Tab	Press Ctrl ▸▸ T .